

C637

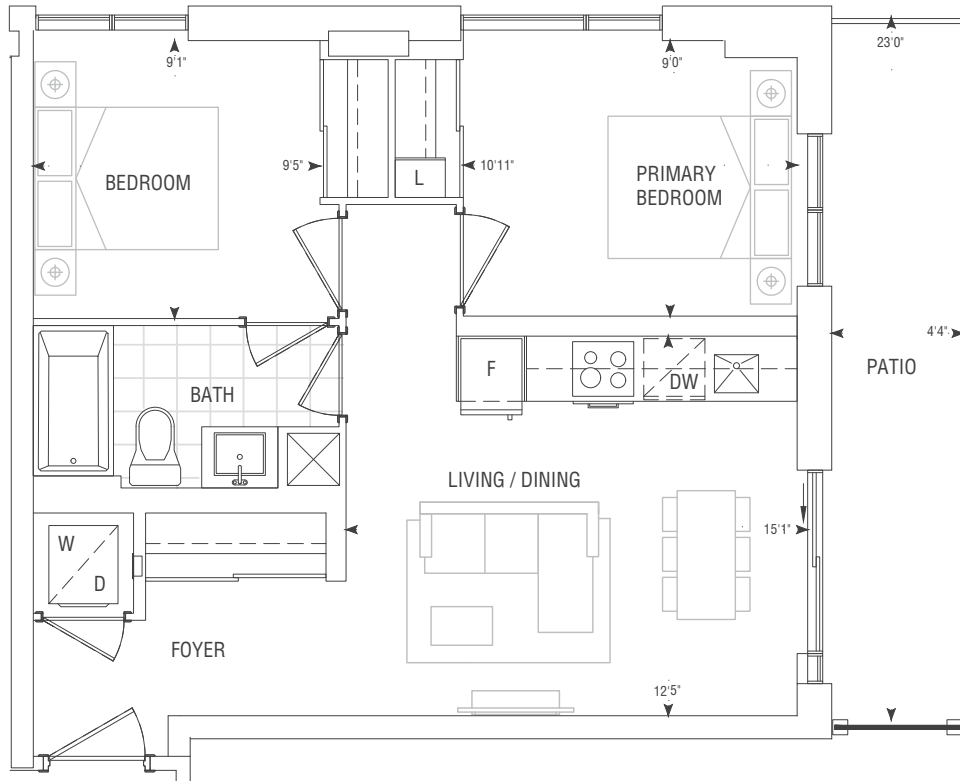
2 BEDROOM



INTERIOR
637 SQ.FT.

EXTERIOR
98 SQ.FT.

TOTAL
735 SQ.FT.



9' CEILING FLOOR 1



1ST FLOOR

Dimensions, specifications, layouts, location of materials and fixtures, tile floor patterns and architectural detailing (including window size and location and door size, location and swing) are approximate only and are subject to change or modifications, without notice. Actual usable floor space varies from stated floor area. Orientation of suite may be reverse and Purchaser agrees to accept same. Balconies, terraces and patios are exclusive use common elements shown for display purposes only and location and size are subject to change without notice. All illustrations are artist concept only. The provisions of Schedule "X" of this Agreement, including Section 6 and 38 apply to this Schedule. E. & O.E. July 2023

C835

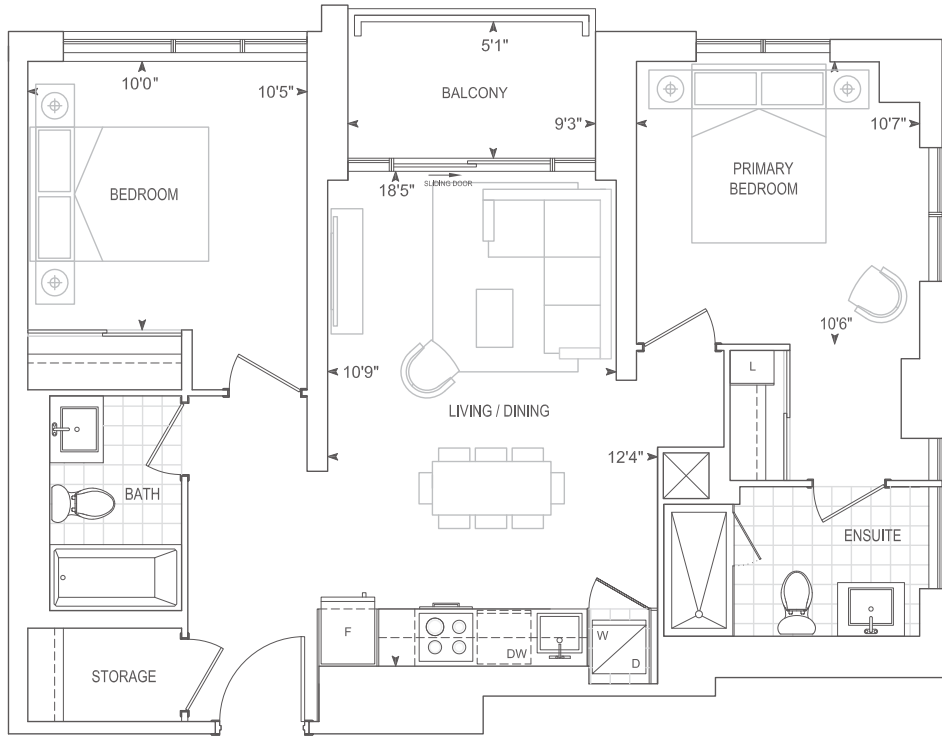
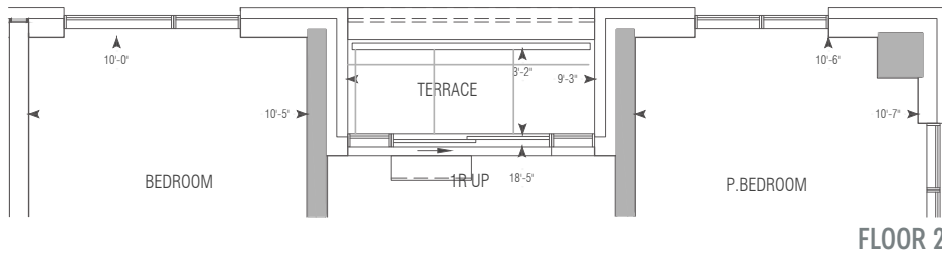
2 BEDROOM



INTERIOR
835 SQ.FT.

EXTERIOR
47 SQ.FT.

TOTAL
882 SQ.FT.



9' CEILING • FLOORS 2-7
10' CEILING • PH FLOOR



Dimensions, specifications, layouts, location of materials and fixtures, tile floor patterns and architectural detailing (including window size and location and door size, location and swing) are approximate only and are subject to change or modifications, without notice. Actual usable floor space varies from stated floor area. Orientation of suite may be reverse and Purchaser agrees to accept same. Balconies, terraces and patios are exclusive use common elements shown for display purposes only and location and size are subject to change without notice. All illustrations are artist concept only. The provisions of Schedule "X" of this Agreement, including Section 6 and 38 apply to this Schedule. E. & O.E. August 2024